

TAILORING CATALOGUE



LA BOWTIQUE

T A I L O R I N G

After more than a decade in bespoke tailoring on Savile Row — including six years with Huntsman — and creating bow ties and cummerbunds for some of the world's leading tailoring houses and luxury menswear stores, it gives me great pleasure to introduce la Bowtique Tailoring.

We create everything from dinner suits and smoking jackets to evening and silk shirts, and more.

WHILE BLACK TIE IS AT THE HEART OF WHAT WE DO, WE ALSO LOVE DESIGNING REFINED LOUNGE SUITS WITH THE SAME CARE AND ATTENTION TO DETAIL.

I hope our vision inspires you, and I would be delighted to welcome you to explore more with us.

Warm regards,

Mickael Korausch





What is Handmade-to-Measure?

INTRODUCING LA BOWTIQUE'S HANDMADE- TO-MEASURE SERVICE

— a sophisticated blend of modern tailoring with the elegance of bespoke craftsmanship. Our handmade garments are designed to meet the highest standards, offering a unique experience that allows you to create anything from a timeless dinner suit to a whole wardrobe covering your lifestyle.

Our approach to tailoring is thorough yet straightforward, ensuring that each step is seamless. We believe tailoring doesn't always need to be a complicated process, or at least not to our customers. Whether you're seeking a classic dinner suit, an opulent smoking jacket, immaculate business suits or a timeless wedding suit, our expertise spans across various suiting forms from different periods, providing you with a garment that is not only stylish but also historically informed.

TAILORING PERFECTION



FLEXIBILITY IN STYLE

At La Bowtique, we understand that your style is personal. Our made-to-measure service offers unparalleled flexibility, allowing you to choose from a wide range of styling options. From traditional evening wear to contemporary business suits, every garment is crafted to match your expectations.



CRAFTSMANSHIP

Our garments are crafted with a bespoke approach: fully handmade and fully canvassed, allowing us to achieve the recognisable bespoke silhouette. Whether you desire the structured elegance of a traditional British garment or the softer drape of Italian tailoring, we have the expertise to bring your vision to life.

We understand that every garment is individual, and that certain styles or fabrics are better suited to specific silhouettes. Mickael is here to guide you through these choices, ensuring that your garment reflects your personal style and its intended use.



ESUOH STYLE

Although we don't adhere to a single style, our main house style draws inspiration from the elegance of the 1940s mixed with the suave 1980s, reimagined for today's world. Picture a low gorge, long coats and straight-cut trousers. Our philosophy is that the best style is the one that suits you most. Flexibility is at the heart of our offering, allowing us to tailor each suit to the unique preferences and needs of its wearer.



DEDICATED EXPERTISE

From the initial consultation to the final fitting, you will be guided by Mickael Korausch, our founder, who will take you through the entire process. With 10 years of experience working on Savile Row and extensive knowledge on evening wear, you are in safe hands. This personalized approach ensures that your vision is understood and brought to life with meticulous attention to detail from start to finish.



We offer unparalleled versatility in your suit choices, blending timeless style with modern flair. Whether you're drawn to the timeless suit we all love or the more stylised lines of an 80s suit or the relaxed, sophisticated and sometimes eccentric vibe of 70s tailoring, we can create a suit that captures the essence of these iconic eras while making sure it is still relevant today. Our designs ensure that your suit remains timeless yet distinctly modern.



THE EXPERIENCE

At La Bowtique, our Elevated Made-to-Measure service is designed to provide a seamless and personalized experience, ensuring that your garment is crafted to perfection. Here's how our process works:

First Contact

Start your journey with us by reaching out to arrange a conversation about your needs. You're welcome to visit our showroom or meet with us in central London. For our international clients, we're pleased to offer worldwide travel for consultations. Our goal is to make the process as convenient as possible, no matter where you are. You can reach Mickael directly on WhatsApp, email at contact@labowtique.com or via Instagram.

Initial Consultation

During your consultation, you'll have the opportunity to try on various garments and discuss your fit preferences with Mickael, our founder. Mickael will use a mix of our master garments and measurements, to ensure a clear and smooth process. He will take the time to listen to your needs and provide guidance on the most suitable options for you. Together, you'll explore styles, fabrics, and every detail that will go into crafting your unique garment.

Final Fitting

Within 6 to 8 weeks, your garment will be ready for its final fitting. At this stage, Mickael will carefully examine the fit and determine if any fine-tuning is required. If alterations are needed, we will aim to complete them within 10 days. After this, your garment will be ready for you to wear and enjoy.

Future Orders

Once you've experienced our Handmade-to-Measure service, ordering additional suits is effortless. Simply contact us to choose your fabric, and we can create new pieces for you without the need for another initial fitting. Our records of your preferences and measurements ensure that every future garment will meet the same high standards.



**"THE MAIN REASON
I'D RECOMMEND
LA BOWTIQUE IS
THE SAME REASON
I WENT TO THEM
FOR MY FIRST BOW
TIE: THEIR AFFINITY
FOR EVENING WEAR.
MICKAEL HAS WORN
VIRTUALLY EVERY
TYPE OF EVENING
GARMENT YOU MIGHT
EVER CONSIDER FOR
YOURSELF; HE KNOWS
THE LITTLE DETAILS
THAT CAN MAKE OR
BREAK BLACK TIE
AND IS FAMILIAR
WITH THE ANGELS
AND THE DEVIL
THAT LIE THEREIN.
BUT, ABOVE ALL, HE
UNDERSTANDS THAT
THESE ARE CLOTHES
OF CELEBRATION, JOY
AND FUN."**

Manish Puri –



Tomisin wears a single-breasted, one-button shawl lapel jacket in wool flannel by Fox Brothers, paired with single-pleat trousers. A crisp white Marcella-front shirt fastened with studs, styled with a black silk satin small diamond bow tie and a traditional five-pleat cummerbund. Accents include a Baiser Nocturne pocket square, black silk socks, and Deakin & Francis studs and cufflinks. Completing the look: patent wholecuts by Gaziano & Girling and opticals by E.B. Meyrowitz.





William wears a single-breasted, one-button peak lapel jacket in midnight blue barathea from Dugdale, worn with single-pleat trousers. A pale blue poplin pleated shirt with a concealed placket, finished with a midnight blue silk satin medium dropped Crompton bow tie and a traditional five-pleat cummerbund. Accented with a white silk pocket square, midnight blue silk socks, and Deakin & Francis cufflinks. The look is completed with opera pumps by Ele Laborde.

**“I CAN’T RECOMMEND
LA BOWTIQUE HIGHLY
ENOUGH FOR ANYONE
SEEKING HIGH
QUALITY AND UNIQUE
FORMAL WEAR AND
ACCESSORIES.
MICKAEL’S EXPERTISE,
LEVEL OF SERVICE AND
ATTENTION TO DETAIL
SHONE THROUGH
IN EVERY STEP OF
THE PROCESS. HE
TOOK THE TIME TO
UNDERSTAND EXACTLY
WHAT I WANTED AND
OFFERED INVALUABLE
ADVICE ALONG THE
WAY THAT RESULTED
IN A WONDERFUL
EXPERIENCE AND
AN OUTFIT I WILL BE
PROUD TO WEAR FOR
YEARS TO COME.”**

– Alain Caplan



Manish wears a single-breasted, one-button belted shawl lapel jacket cut in vintage swirled wool, silk, and lurex, paired with single-pleat trousers. An off-white silk shirt is styled with a black silk satin Ritchie bow tie and a rounded four-pleat cummerbund. Details include an off-white silk pocket square, black silk socks, and velvet opera pumps by Gaziano & Girling.





Tomisin wears a double-breasted 4x1 low-gorge peak lapel jacket in black barathea from Dugdale, worn with single-pleat trousers. A white poplin dinner shirt with concealed placket is paired with a black silk satin Laurent bow tie and finished with a crisp white linen pocket square. Accents include

black silk socks and cufflinks by Deakin & Francis. The look is completed with patent leather opera pumps by Bowhill & Elliott.



Williams wears a single-breasted, one-button shawl lapel jacket in vintage moiré, paired with single-pleat trousers. A white Marcella-front dinner shirt, fastened with studs, is styled with a midnight silk satin Brandon bow tie and a rounded four-pleat cummerbund. Finishing touches include a white linen pocket square, midnight blue silk socks, and studs and cufflinks by Deakin & Francis. Completing the ensemble: opera pumps by Ele Laborde.





“I HAD A REALLY WONDERFUL TIME AT LA BOWTIQUE, THERE ARE VERY FEW PEOPLE THAT TRULY UNDERSTAND THE ESSENCE AND ETIQUETTE OF BLACK TIE, I AM VERY HAPPY TO CONFIRM THAT MICKAEL DOES.

THERE IS SUCH PROFOUND CARE, CRAFT AND DETAIL IN HIS ARTISTRY, HIS PHILOSOPHY AND ULTIMATELY DESIGNING CLOTHES PERFECTLY SUITED TO HIS CUSTOMERS. I REALLY ENJOYED MY TIME AT THE SHOP AND I CANNOT WAIT TO REVISIT AGAIN FOR MY NEXT COMMISSION.

LONG LIVE LA BOWTIQUE!”

- Tomisin Adepeju



Tomisin wears a single-breasted, one-button modern shawl lapel jacket in black barathea from Dugdale, paired with single-pleat trousers. A white poplin dinner shirt with concealed placket is matched with a black silk satin small Laurent bow tie and a traditional five-pleat cummerbund. Details include a white linen pocket square, black silk socks, and cufflinks by Deakin & Francis, accented with a vintage red boutonniere. Velvet shoes by Gaziano & Girling complete the ensemble.



Manish wears a silk leopard-print pajama top paired with black silk satin pyjama trousers. The look is finished with silk leopard opera pumps by La Bowtique x Bowhill & Elliott.



Mickael wears a single-breasted, one-button peak lapel jacket in seafoam green moiré, paired with black barathea single-pleat trousers from Dugdale. A

white poplin pleated shirt with studs is styled with a black silk satin Hranek bow tie and a crisp white linen pocket square. Finishing touches include black silk socks with cufflinks and studs by Deakin & Francis. Seafoam green moiré opera pumps by La Bowtique x Bowhill & Elliott complete the ensemble.





Tomisin wears a single-breasted, one-button shawl lapel jacket in wool flannel by Fox Brothers, paired with single-pleat trousers. A crisp white Marcella-front shirt fastened with studs, styled with a black silk satin small diamond bow tie and a traditional five-pleat cummerbund. Accents include a Baiser Nocturne pocket square, black silk socks, and Deakin & Francis studs and cufflinks. Completing the look: patent wholecuts by Gaziano & Girling and opticals by E.B. Meyrowitz.



"I'VE HAD THE PLEASURE OF BECOMING A SEASONED BESPOKE CUSTOMER IN THE PAST DECADE WITH NUMEROUS SAVILE ROW TAILORS AND MY EXPERIENCE COMMISSIONING WITH MICKAEL SITS AMONGST THE VERY TOP.

HE IS WARM AND VERY PROFESSIONAL, EXTREMELY ATTENTIVE TO DETAILS AND YOU GET AN IMMEDIATE SENSE OF BEING IN THE HANDS OF SOMEONE WHO HAS MASTERED THEIR CRAFT.

CHOOSING THE MATERIALS AND VISITING FOR FITTINGS HAVE BEEN A PLEASURE, BUT MOST OF ALL - THE RESULTING GARMENT IS JUST SO ON POINT FOR ELEGANCE AND COMFORT.

CAN'T WAIT FOR MY NEXT BLACK TIE OCCASION NOW!"

- William Laborde





Manish wears a single-breasted, one-button peak lapel jacket in black barathea from Dugdale, worn with single-pleat trousers. A white poplin pleated shirt with studs is paired with a black silk satin medium dropped Crompton bow tie and a traditional five-pleat cummerbund. Accents include a white linen pocket square, black silk socks, and Deakin & Francis studs and cufflinks. The look is completed with opera pumps by Bowhill & Elliott.

Tomis wears a single-breasted, one-button modern shawl lapel jacket in black barathea from Dugdale, paired with single-pleat trousers. A white poplin dinner shirt with concealed placket is styled with a black silk satin Continental bow tie and a traditional five-pleat cummerbund. Accents include a white linen pocket square, black silk socks, and cufflinks by Deakin & Francis, finished with the flourish of a vintage red boutonniere. Velvet shoes by Gaziano & Girling complete the look.

William wears a single-breasted, one-button peak lapel jacket in midnight blue barathea from Dugdale, paired with single-pleat trousers. A pale blue poplin pleated shirt with concealed placket is styled with a midnight blue silk satin medium dropped Crompton bow tie and a traditional five-pleat cummerbund. Accents include a white silk pocket square, midnight blue silk socks, and cufflinks by Deakin & Francis. The ensemble is completed with opera pumps by Efe Laborde.

Tomisin wears a single-breasted, one-button modern shawl lapel jacket in black barathea from Dugdale, paired with single-pleat trousers. A white poplin dinner shirt with concealed placket is styled with a black silk Continental bow tie and a traditional five-pleat cummerbund. Accents include a white linen pocket square, black silk socks, and cufflinks by Deakin & Francis, finished with the flourish of a vintage red boutonniere. Velvet shoes by Gaziano & Girling complete the look.





Mickael wears a double-breasted 6x2 peak lapel jacket in black barathea by Dugdale, paired with single-pleat trousers. A white poplin pleated shirt with studs is styled with a black silk grosgrain large dropped bow tie and a crisp white linen pocket square. Accessories include black silk socks, studs and cufflinks by Deakin & Francis, and black Oxfords by Gaziano & Girling, completed with glasses by E.B. Meyrowitz.

Smiles, Models Own



GARMENTS

Black Barathea
Modern Shawl Lapel
Dinner Suit



Midnight Blue Barathea
Peak Lapel
Dinner Suit



**Cream Barathea
Wide Shawl Lapel
Dinner Jacket**



**Black Barathea
Peak Lapel
Dinner Suit
Low Buttoning 4x1**



**Grey Wool Flannel
Shawl Lapel
Dinner Jacket**



**Black Barathea
Peak Lapel
Dinner Suit 6x2**



**Green Velvet
Wide Shawl Lapel
Smoking Dinner
Jacket 4x1**



**Green Moire
Peak Lapel
Dinner Jacket**



**Burgundy Silk
Peak Lapel
Dinner Jacket**



**Blue Moire
Wide Shawl Lapel
Dinner Jacket**



**Navy Twill
Peak Lapel
2-Piece Suit**



**Grey Twill
Peak Lapel
3-Piece Suit**



**Grey Fresco
Notch Lapel
2-Piece Suit**



**Brown And Cream
Houndstooth Wool/Silk
Peak Lapel
Jacket**





**Pale Blue Linen Windowpane
Peak Lapel
Jacket**





Max Murdoch

"Mickael made my wedding tuxedo and I loved the whole experience. He's friendly, fun and supremely knowledgeable. He answered all of my niche questions about suits, tuxedos and shoes. He even answered my questions about his favourite places to go in Florence! It was my first made-to-measure suit of any kind. I was extremely happy with the end result, and I'm already looking forward to my next visit."

Anthony Weston

"I was looking for a suit for my wedding in Sicily and knew from the start I wanted to wear black tie. The challenge was that not many places truly specialise in bespoke black tie suits. I came across a book written by Mickael Korausch, which led me to La Bowtique. The book itself is worth having; it told me everything I needed to know about black tie.



I knew I wanted a double-breasted suit; partly because I carry a bit of a beer belly; but since the wedding was abroad, it also needed to be made from a breathable fabric which really made a difference on the wedding day in 29c degree heat! Mickael guided me through the whole process, from measurement to fitting, in his unique Shoreditch studio, surrounded by other crafters and artists. The atmosphere alone shows the value of this kind of service.

Across multiple fittings and adjustments, I got to know Mickael very well, and by the end he felt more like a friend. The bow tie was another detail that mattered; I needed something special, as a standard one wouldn't suit my build. This is where La Bowtique's expertise shone through. Mickael also pointed me to trusted partners for accessories that complemented the suit perfectly.

I couldn't recommend La Bowtique enough — whether it's for black tie at a special occasion, or a bespoke suit for any event. The fit, quality, and personal touch are second to none and I will be returning!"

TESTIMONIALS



Chris Chasseaud

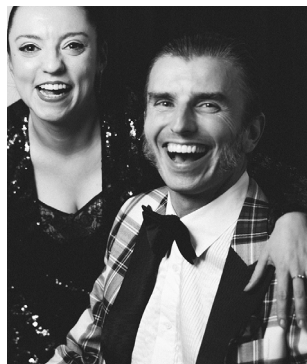
"I've always wanted a black tie dinner suit, but didn't like what was on offer at other brands. I knew La Bowtique made the best bow ties, so when I heard they were going to start doing Black Tie Tailoring I just knew I had to go to them.

I didn't know much on Black Tie tailoring, but knew I wanted a classic style, which Mickael duly helped advise. His knowledge and expertise is second-to-none. I was reassured throughout the whole process, from initial consultation and measurements to the first and final fitting.

I can't recommend La Bowtique enough as I had a fantastic made-to-measure Black Tie tailoring experience. I even got a MTM shirt along with one of their bow ties, comparing a few to find the best fit with my face and physic. I'm looking forward to wear my dinner suit for many years to come."

**"THE SUIT WAS
WONDERFUL,
I NEVER FELT
SO GOOD!"**

— Jayson Ball



Joe Adcock

"The process of discussing, choosing, measuring and finessing my evening suit was a pleasurable experience. I placed myself entirely in Mickael's experienced hands, as he has a deep understanding of what works for the individual, and it was a joy to see the end product come to life with each visit to the showroom. Mickael is a delight to work with, and his excitement at seeing me in the outfit is a testament to his passion and precision for all things black tie."



P

R

I

FORMAL WEAR

Dinner Suits
from £2,400
(with a complimentary bow tie included)

Waistcoats
from £400

Dinner / Smoking Jackets
from £2,000

Dinner Trousers
from £600

Dinner Shirts
from £300

Silk Shirts
from £400

Overcoats
from £2,400

Cummerbunds
from £250

Bow ties
from £190

Lounge Suits
from £2,200

Waistcoat
from £400

Casual Jackets
from £1,800

Casual Trousers
from £500

Casual Shirts
from £250

LOUNGE & CASUAL WEAR

C

I

N

G

BOOKING B INFORMATION G

Scheduling your tailoring consultation is easy and straightforward.

Simply send us a message on WhatsApp for quick, direct communication — we'll talk through your needs and confirm a time that works best for you.

If you prefer, you can also book by email, where you can share your preferred date, time, and any specific requests.

For a more personal touch, feel free to give us a phone call, and Mickael will be happy to assist you right away.

No matter which method you choose, we'll ensure your consultation is scheduled smoothly.

E – contact@labowtique.com
WHATSAPP – +44 757 2869 286
IG – @labowtiquebowties
SHOWROOM – E2 7QS





LA BOWTIQUE